

OUR NAME HAS A NICE RING TO IT

 **MATHEUS LUMBER**
COMPANY, INC.



At Matheus Lumber we have a long tradition of providing quality products and outstanding customer service to the North American building industry. For over 75 years, Matheus has offered personalized service from a team of professional wood products technicians who know the business and understand the products available today. As one of the last true lumber wholesalers in the country, our team can answer all of your technical questions, from span specifications and grade rules to species options. The company operates branch offices and supply yards in Woodinville, WA, Vancouver, WA, Ellensburg, WA, and Post Falls, ID.



Matheus Lumber - Woodinville

Matheus' Woodinville, WA branch is the largest of the company's four operations, and is also the corporate headquarters. With a staff of 33 people and a fleet of six trucks, including five roll trucks that can get into tight urban building sites in Seattle and Tacoma, the branch can quickly fill and deliver your order. In the Puget Sound area, the Woodinville branch has supplied materials to a number of major current and past projects, including: Safeco Field; Qwest Field; Interstate 5 HOV expansion; Sound Transit's Central Link Light Rail; and Harborview Medical Center. The Woodinville branch also serves customers throughout the western US, including other areas of Washington, Oregon, California, Arizona, Idaho, Utah, Nevada, Hawaii and Alaska. In addition to traditional solid and engineered building products, the Woodinville branch manufactures and supplies floating docks from their Maltby, WA fabrications yard.

Our Products

Lumber and Timber: All sizes, rough or surfaced, treated and untreated, from dunnage to finish.

Sheathing: Rated plywood and OSB, rough and sanded, siding and paneling, forming and underlayments.

Concrete Forms: All types and grades from BBX-OES to HDO 100/100 for achieving one to one hundred pours.

Engineered Wood Products: All sizes and truss types, including cantilevered, treated and prefabricated.

Species: Douglas fir, Hemlock, Spruce-Pine-Fir, Western Red Cedar, Redwood and some hardwoods.

Fabrication:

Matheus Woodinville branch has specialized in the fabrication of wood members for 25 years. This includes drilling, trimming, and assembly of treated members. The following are examples of available products: tunnel lagging, crane mats, bridge timbers, floats, railroad ties, docks and piers, guard rail posts, form panels, piling, timber trusses, keel blocks, special crates, and truck bed lumber. We can also dap, adze, bore, cant, cut curves, dado and trim when required prior to preservative treatments.

Sales and Customer Service Contacts at Our Woodinville Branch:

Name:	Title/Region:	Extension:	E-mail:
Bob Brodie	Outside Sales/Marketing	117	bobb@matheuslumber.com
Stuart Hagen	Hawaii/Military/Specialties	106	stuarth@matheuslumber.com
Janet Velasco	Sales Assistant	105	janet@matheuslumber.com
Bob Lafavor	N. California/Multi Family	103	bobl@matheuslumber.com
Lynne Gibson	Sales Assistant	104	lynne@matheuslumber.com
Ben Powell	Pacific NW/Western US	126	ben@matheuslumber.com
Ty Men	Sales Assistant	118	tymen@matheuslumber.com
David Neiger	Pacific NW/Western US	125	dave@matheuslumber.com
Diane Burke	Sales Assistant	112	diane@matheuslumber.com
Gary Powell	Pacific Northwest	108	gary@matheuslumber.com
Nancy Thompson	Sales Assistant	107	nancy@matheuslumber.com
J.R. Reynolds	Marine/Alaska/Pacific NW	113	jr@matheuslumber.com
Diane Burke	Sales Assistant	112	diane@matheuslumber.com
Mike Warnek	Pacific Northwest	110	mike@matheuslumber.com
Janet Velasco	Sales Assistant	105	janet@matheuslumber.com



Woodinville Office:

15800 Woodinville-Redmond Road NE, Woodinville, WA 98072-2260
Ph.: 425-489-3000 . Toll Free: 1-800-284-7501 . Fax: 425-822-4028
e-mail: info@matheuslumber.com website: www.matheuslumber.com

Vancouver, WA Branch Office:

Ph.: 360-693-1702 • Toll Free: 1-866-693-0003 • Fax: 360-693-1884

Eastern Washington Branch Office:

Ph.: 509-962-5422 • Toll Free: 1-888-489-3228 • Fax: 509-962-5442

Post Falls Branch Office:

Ph.: 208-457-9829 • Toll Free: 1-877-947-9663 • Fax: 208-457-9820



Matheus Lumber Woodinville

OUR NAME HAS A NICE RING TO IT



At Matheus Lumber we have a long tradition of providing quality products and outstanding customer service to the North American building industry. For over 75 years, Matheus has offered personalized service from a team of professional wood products technicians who know the business and understand the products available today. As one of the last true lumber wholesalers in the country, our team can answer all of your technical questions, from span specifications and grade rules to species options. The company operates branch offices and supply yards in Woodinville, WA, Vancouver, WA, Ellensburg, WA and Post Falls, ID.

 **MATHEUS LUMBER**
C O M P A N Y, I N C.



Matheus Lumber - Vancouver

Whether you require traditional building materials or engineered wood products for large-scale construction projects, Matheus' Vancouver, WA branch can recommend and supply innovative solutions to meet your needs, timelines, and budget. With a staff of nine people, all specialists in the building industry, the Vancouver branch has supplied materials for a number of large projects in Southwest Washington, Northwest Oregon and across the country. Many of the apartment and condominium complexes, assisted living facilities and commercial buildings that Matheus' Vancouver branch has supplied are between 200,000 and 500,000 square feet. For specialized projects such as ski lodges and mountain resorts, Matheus can source hard to find specialized engineered products such as I-Beams, I-Joists, and over-sized Glue-Lam beams.

Our Products

Lumber and Timber: All sizes, rough or surfaced, treated and untreated, from dunnage to finish.

Sheathing: Rated plywood and OSB, rough and sanded, siding and paneling, forming and underlayments.

Concrete Forms: All types and grades from BBX-OES to HDO 100/100 for achieving one to one hundred pours.

Engineered Wood Products: All sizes and truss types, including cantilevered, treated and prefabricated.

Species: Douglas fir, Hemlock, Spruce-Pine-Fir, Western Red Cedar, Redwood and some hardwoods.

Vancouver Branch Matheus People

Sales and Customer Service Contacts at the Vancouver, WA Branch:

Name:	Title/Region:	Ext.	E-mail:
Larry Tommerup	Branch Manager/Sales	11	larry@matheuslumber.com
Jan Ogata	Sales Assistant to Larry Tommerup	16	jan@matheuslumber.com
Tim Kolshinski	Account Manager	15	tim@matheuslumber.com
Sandy Fladager	Sales Assistant to Tim Kolshinski	14	sandy@matheuslumber.com
Korey Kier	Account Manager	17	korey@matheuslumber.com
Kayla Palmer	Sales Assistant		kayla@matheuslumber.com



Vancouver, WA Branch Office:

10000 Northeast 7th Avenue, Vancouver, WA 98685

Ph.: 360-693-1702 Toll Free: 1-866-693-0003 Fax: 360-693-1884

e-mail: info@matheuslumber.com website: www.matheuslumber.com

Woodinville Office:

Ph.: 425-489-3000 • Toll Free: 1-800-284-7501 • Fax: 425-822-4028

Eastern Washington Branch Office:

Ph.: 509-962-5422 • Toll Free: 1-888-489-3228 • Fax: 509-962-5442

Post Falls Branch Office:

Ph: 208-457-9829 • Toll Free: 1-877-947-9663 • Fax: 208-457-9820

Matheus Lumber - Vancouver

OUR NAME HAS A NICE RING TO IT



At Matheus Lumber we have a long tradition of providing quality products and outstanding customer service to the North American building industry. For over 75 years, Matheus has offered personalized service from a team of professional wood products technicians who know the business and understand the products available today. As one of the last true lumber wholesalers in the country, our team can answer all of your technical questions, from span specifications and grade rules to species options. The company operates branch offices and supply yards in Woodinville, WA, Vancouver, WA, Ellensburg, WA and Post Falls, ID.

 **MATHEUS LUMBER**
COMPANY, INC.



Matheus Lumber - Ellensburg

Matheus' Ellensburg, WA branch is expanding rapidly to accommodate the increased population growth most Eastern Washington communities are currently experiencing. The branch recently moved into a newer and larger space in Ellensburg, complete with indoor storage and an extensive yard. With a growing staff of 10 people and three delivery trucks, including two forklift-equipped flatbeds, the branch can quickly fill and deliver orders throughout Eastern Washington. They have supplied framing lumber, specialty kiln dried timbers, panels and concrete forming materials for a number of local projects, including the Prospector Inn and high-end custom homes in the resort community of Suncadia. They also service national accounts and can arrange for shipping anywhere in the nation. Major projects they have recently supplied materials for include: the Montessori Reservoir near Las Vegas, NV; the Sunset Casino, in Las Vegas; the Gaylord Convention Center in Oxon Hill, MD; and the Carillon II Structures, which is a large residential development in Miami, FL.

Our Products

Lumber and Timber: All sizes, rough or surfaced, treated and untreated, from dunnage to finish.

Sheathing: Rated plywood and OSB, rough and sanded, siding and paneling, forming and underlayments.

Concrete Forms: All types and grades from BBX-OES to HDO 100/100 for achieving one to one hundred pours.

Engineered Wood Products: All sizes and truss types, including cantilevered, treated and prefabricated.

Species: Douglas fir, Hemlock, Spruce-Pine-Fir, Western Red Cedar, Redwood and some hardwoods.

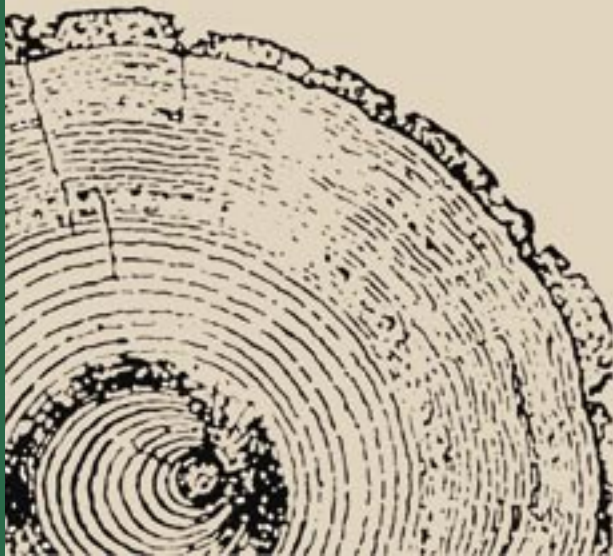
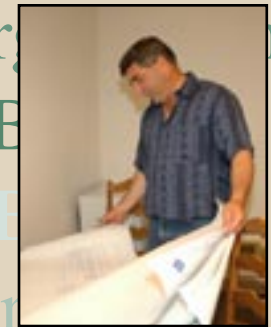
Windows and Doors: The Matheus Lumber Ellensburg branch is a distributor for Jeld-Wen windows and doors.



Ellensburg Branch Matheus People

Sales and Customer Service Contacts at Our Ellensburg, WA Branch:

Name:	Title/Region:	E-mail:
Dan Powell	VP/Sales E. Washington/National	danmatheus@yahoo.com
Schalan Powell	Sales/Sales Assistant to Dan Powell	schalan@matheuslumber.com
Casey Smith	Sales E. Washington/Western US	casey@matheuslumber.com
Ronda Fahrenkopf	Sales Assistant to Casey Smith	ronda@matheuslumber.com
Les Pennington	Yard/Shipping Manager	les@matheuslumber.com
Dave Powell	Sales/National	dave.powell@matheuslumber.com
Brady Tommerup	Sales/E. Washington/Mountain Region	brady@matheuslumber.com



Eastern Washington Branch Office:

1433 West University Way, Ellensburg, WA 98926

Ph.: 509-962-5422 • Toll Free: 1-888-489-3228 • Fax: 509-962-5442

e-mail: info@matheuslumber.com website: www.matheuslumber.com

Vancouver, WA Branch Office:

Ph.: 360-693-1702 . Toll Free: 1-866-693-0003 . Fax: 360-693-1884

Woodinville Office:

Ph.: 425-489-3000 .• Toll Free: 1-800-284-7501 • Fax: 425-822-4028

Post Falls Branch Office:

Ph.: 208-457-9829 • Toll Free: 1-877-947-9663 • Fax: 208-457-9820

Matheus Lumber - Eastern WA Branch