

# Matheus Lumber - Post Falls, Idaho

Matheus' Post Falls, ID branch is expanding rapidly to accommodate the increased population growth of Eastern Washington, Idaho Panhandle and Western Montana. The branch has a large yard with indoor storage. With a growing staff of eight people and two delivery trucks with forklift-equipped flatbeds, the branch can quickly fill and deliver orders throughout the Spokane, Coeur d'Alene area. They have supplied framing lumber, specialty kiln dried timbers, panels and concrete forming materials for a number of local projects, including the Northern Quest Casino and high-end custom homes in the resort of Gozzer Ranch. They also service national accounts and can arrange for shipping anywhere in the nation. Major projects they have recently supplied materials for include: Malmstrom Air Force Base near Great Falls, MT, Northern Quest Casino in Airway Heights, WA and numerous schools, apartments, and motels throughout the Northwest.

## Our Products:

**Lumber and Timber:** All sizes, rough or surfaced, treated and untreated, from dunnage to finish.

**Sheathing:** Rated plywood and OSB, rough and sanded, siding and paneling, forming and underlayments.

**Concrete Forms:** All types and grades from BBX-OES to HDO 100/100 for achieving one to one hundred pours.

**Engineered Wood Products:** All sizes and truss types, including cantilevered, treated and prefabricated.

**Species:** Douglas fir, Hemlock, Spruce-Pine-Fir, Western Red Cedar, Redwood and some hardwoods.

## Fabrication:

Matheus Lumber has specialized in the fabrication of wood members for over 75 years. This includes drilling, trimming, and assembly of treated members. The following are examples of available products: tunnel lagging, crane mats, bridge timbers, floats, railroad ties, docks and piers, guard rail posts, form panels, piling, timber trusses, keel blocks, special crates, and truck bed lumber. We can also dap, adze, bore, cant, cut curves, dado and trim when required prior to preservative treatments.



At Matheus Lumber we have a long tradition of providing quality products and outstanding customer service to the North American building industry. For over 75 years, Matheus has offered personalized service from a team of professional wood products technicians who know the business and understand the products available today. As one of the last true lumber wholesalers in the country, our team can answer all of your technical questions, from span specifications and grade rules to species options. The company operates branch offices and supply yards in Woodinville, WA, Vancouver, WA, Ellensburg, WA, Post Falls, ID, San Marcos, TX and Chandler, AZ.





OUR  
NAME  
HAS A  
NICE RING  
TO IT

Sales and Customer Service Contracts at Our Post Falls, Idaho Branch:

Name:	Title	E-mail:
Ryan Powell	General Manager	ryan@matheuslumber.com
Bernie Dituri	Sales Assistant	bernie@matheuslumber.com
Dave Belles	Sales	daveb@matheuslumber.com
Jason Jares	Sales Assistant	jason@matheuslumber.com
Brady Tommerup	Sales	brady@matheuslumber.com



## Matheus Lumber Post Falls, ID

**Post Falls, Idaho Office:**

**8692 N. Hauser Lake Rd, Post Falls, Idaho 83854**

**Ph.:** 208-457-9829 • **Toll Free:** 1-877-947-9663 • **Fax:** 208-457-9820

**e-mail:** [info@matheuslumber.com](mailto:info@matheuslumber.com) • **website:** [www.matheuslumber.com](http://www.matheuslumber.com)

**Woodinville, WA Office**

**Ph.:** 425-489-3000 • **Toll Free:** 1-800-284-7501 • 425-822-4028

**Vancouver, WA Branch Office:**

**Ph.:** 360-693-1702 • **Toll Free:** 1-866-693-0003 • **Fax:** 360-693-1884

**Eastern Washington Branch Office:**

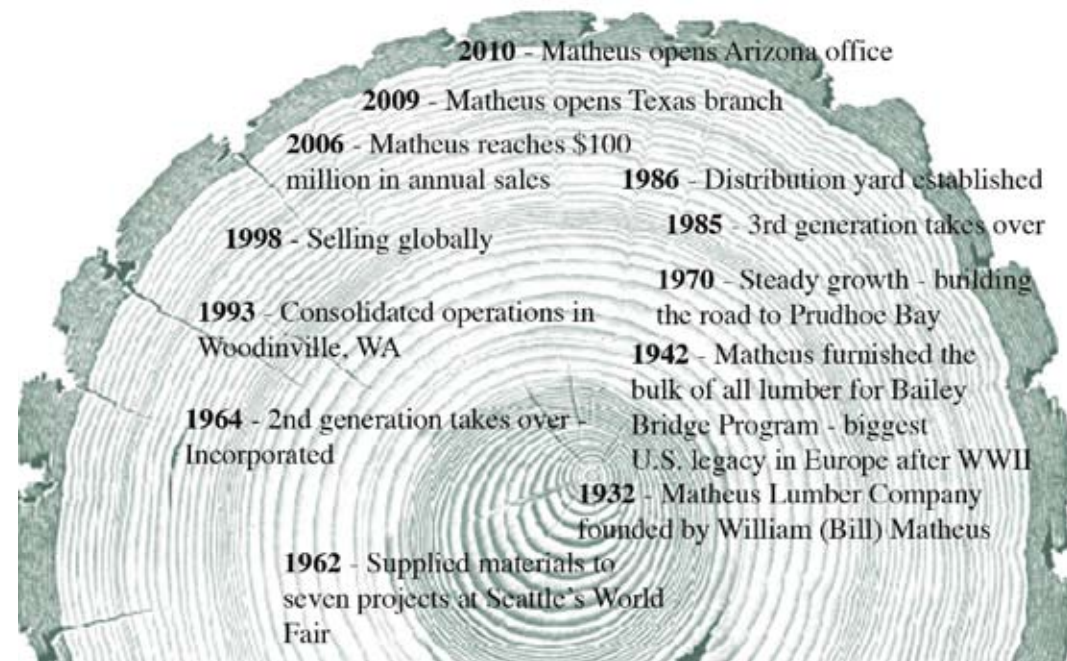
**Ph.:** 509-962-5422 • **Toll Free:** 1-888-489-3228 • **Fax:** 509-962-5442

**San Marcos, Texas Office:**

**Ph.:** Toll Free: 800-414-3442 • **Fax:** 512-396-9229

**Chandler, Arizona Office:**

**Ph:** 480-491-3755 • 480-491-3756



2010 - Matheus opens Arizona office

2009 - Matheus opens Texas branch

2006 - Matheus reaches \$100 million in annual sales

1986 - Distribution yard established

1998 - Selling globally

1985 - 3rd generation takes over

1993 - Consolidated operations in Woodinville, WA

1970 - Steady growth - building the road to Prudhoe Bay

1964 - 2nd generation takes over - Incorporated

1942 - Matheus furnished the bulk of all lumber for Bailey Bridge Program - biggest U.S. legacy in Europe after WWII

1932 - Matheus Lumber Company founded by William (Bill) Matheus

1962 - Supplied materials to seven projects at Seattle's World Fair