

Matheus Lumber - Ellensburg, WA



At Matheus Lumber we have a long tradition of providing quality products and outstanding customer service to the North American building industry. For over 75 years, Matheus has offered personalized service from a team of professional wood products technicians who know the business and understand the products available today. As one of the last true lumber wholesalers in the country, our team can answer all of your technical questions, from span specifications and grade rules to species options. The company operates branch offices and supply yards in Woodinville, WA, Vancouver, WA, Ellensburg, WA, Post Falls, ID and San Marcos, TX.

Ellensburg Branch Matheus People Ellensburg Branch



Matheus' Ellensburg, WA branch is expanding rapidly to accommodate the increased population growth most Eastern Washington communities are currently experiencing. The branch recently moved into a newer and larger space in Ellensburg, complete with indoor storage and an extensive yard. With a growing staff of 10 people and three delivery trucks, including two forklift-equipped flatbeds, the branch can quickly fill and deliver orders throughout Eastern Washington. They have supplied framing lumber, specialty kiln dried timbers, panels and concrete forming materials for a number of local projects, including the Prospector Inn and high-end custom homes in the resort community of Suncadia. They also service national accounts and can arrange for shipping anywhere in the nation. Major projects they have recently supplied materials for include: the Montessori Reservoir near Las Vegas, NV; the Sunset Casino, in Las Vegas; the Gaylord Convention Center in Oxon Hill, MD; and the Carillon II Structures, which is a large residential development in Miami, FL.

Our Products

Lumber and Timber: All sizes, rough or surfaced, treated and untreated, from dunnage to finish.

Sheathing: Rated plywood and OSB, rough and sanded, siding and paneling, forming and underlayments.

Concrete Forms: All types and grades from BBX-OES to HDO 100/100 for achieving one to one hundred pours.

Engineered Wood Products: All sizes and truss types, including cantilevered, treated and prefabricated.

Species: Douglas fir, Hemlock, Spruce-Pine-Fir, Western Red Cedar, Redwood and some hardwoods.

Windows and Doors: The Matheus Lumber Ellensburg branch is a distributor for Jeld-Wen windows and doors.





Sales and Customer Service Contacts at Our Ellensburg, WA Branch:

Name:	Title/Region:	E-mail:
Dan Powell	VP/Sales E. Washington/National	danmatheus@yahoo.com
Schalan Powell	Sales/Sales Assistant to Dan Powell	schalan@matheuslumber.com
Casey Smith	Sales E. Washington/Western US	casey@matheuslumber.com
Ronda Fabiankopf	Sales Assistant to Casey Smith	ronda@matheuslumber.com
Les Pennington	Yard/Shipping Manager	les@matheuslumber.com
Dave Powell	Sales/National	dave.powell@matheuslumber.com
Brady Tommerup	Sales/E. Washington/Mountain Region	brady@matheuslumber.com

**OUR
NAME
HAS A
NICE RING
TO IT**



Matheus Lumber Ellensburg

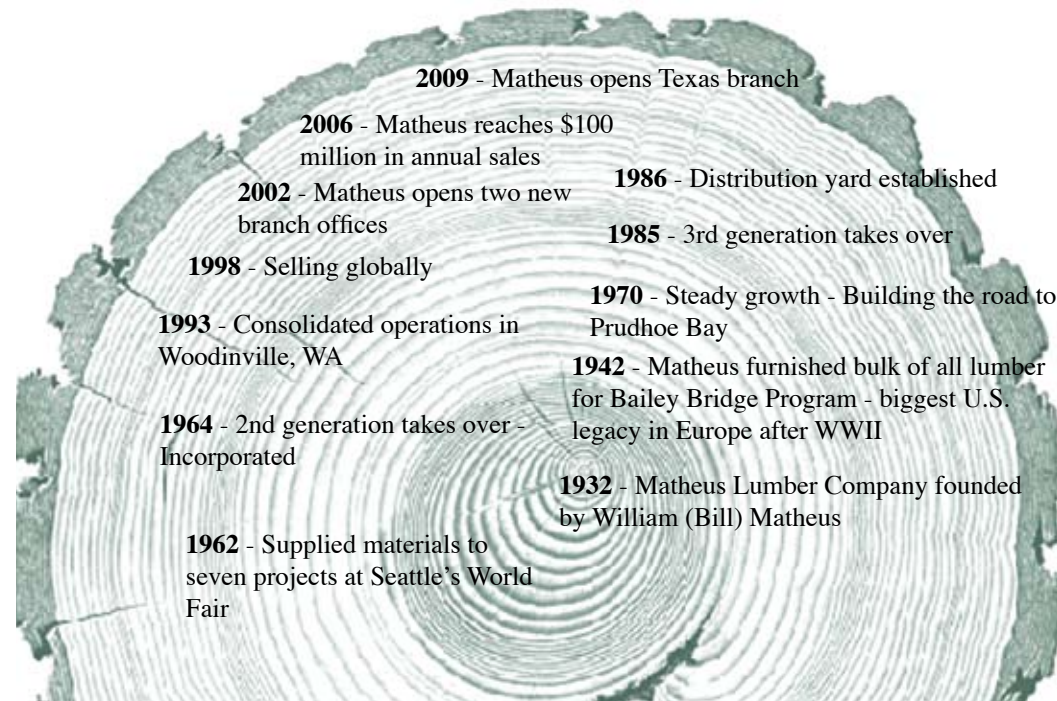
Eastern Washington Branch Office:
 1433 West University Way, Ellensburg, WA 98926
 Ph.: 509-962-5422 • Toll Free: 1-888-489-3228 • Fax: 509-962-5442
 e-mail: info@matheuslumber.com website: www.matheuslumber.com

Vancouver, WA Branch Office:
 Ph.: 360-693-1702 . Toll Free: 1-866-693-0003 • Fax: 360-693-1884

Woodinville Office:
 Ph.: 425-489-3000 • Toll Free: 1-800-284-7501 • Fax: 425-822-4028

Post Falls Branch Office:
 Ph.: 208-457-9829 • Toll Free: 1-877-947-9663 • Fax: 208-457-9820

San Marcos, Texas Office:
 Ph.: Toll Free: 800-414-3442 • Fax: 512-396-9229



- 2009** - Matheus opens Texas branch
- 2006** - Matheus reaches \$100 million in annual sales
- 2002** - Matheus opens two new branch offices
- 1998** - Selling globally
- 1993** - Consolidated operations in Woodinville, WA
- 1964** - 2nd generation takes over - Incorporated
- 1962** - Supplied materials to seven projects at Seattle's World Fair
- 1986** - Distribution yard established
- 1985** - 3rd generation takes over
- 1970** - Steady growth - Building the road to Prudhoe Bay
- 1942** - Matheus furnished bulk of all lumber for Bailey Bridge Program - biggest U.S. legacy in Europe after WWII
- 1932** - Matheus Lumber Company founded by William (Bill) Matheus