

Matheus Lumber - Vancouver, WA



At Matheus Lumber we have a long tradition of providing quality products and outstanding customer service to the North American building industry. For over 75 years, Matheus has offered personalized service from a team of professional wood products technicians who know the business and understand the products available today. As one of the last true lumber wholesalers in the country, our team can answer all of your technical questions, from span specifications and grade rules to species options. The company operates branch offices and supply yards in Woodinville, WA, Vancouver, WA, Ellensburg, WA, Post Falls, ID and San Marcos, TX.

Vancouver Branch

Matheus People

Vancouver Branch



Vancouver Branch

Vancouver Branch

Whether you require traditional building materials or engineered wood products for large-scale construction projects, Matheus' Vancouver, WA branch can recommend and supply innovative solutions to meet your needs, timelines, and budget. With a staff of nine people, all specialists in the building industry, the Vancouver branch has supplied materials for a number of large projects in Southwest Washington, Northwest Oregon and across the country. Many of the apartment and condominium complexes, assisted living facilities and commercial buildings that Matheus' Vancouver branch has supplied are between 200,000 and 500,000 square feet. For specialized projects such as ski lodges and mountain resorts, Matheus can source hard to find specialized engineered products such as I-Beams, I-Joists, and over-sized Glue-Lam beams.

Our Products

Lumber and Timber: All sizes, rough or surfaced, treated and untreated, from dunnage to finish.

Sheathing: Rated plywood and OSB, rough and sanded, siding and paneling, forming and underlayments.

Concrete Forms: All types and grades from BBX-OES to HDO 100/100 for achieving one to one hundred pours.

Engineered Wood Products: All sizes and truss types, including cantilevered, treated and prefabricated.

Species: Douglas fir, Hemlock, Spruce-Pine-Fir, Western Red Cedar, Redwood and some hardwoods.





Sales and Customer Service Contacts at Our Vancouver, WA Branch:

Name:	Title/Region:	Ext.	E-mail:
Larry Tommerup	Branch Manager/Sales	11	larry@matheuslumber.com
Jan Ogata	Sales Assistant to Larry Tommerup	16	jan@matheuslumber.com
Tim Kolshinski	Account Manager	15	tim@matheuslumber.com
Sandy Fladager	Sales Assistant to Tim Kolshinski	14	sandy@matheuslumber.com
Korey Kier	Account Manager	17	korey@matheuslumber.com
Kayla Palmer	Sales Assistant		kayla@matheuslumber.com

**OUR
NAME
HAS A
NICE RING
TO IT**



Matheus Lumber Vancouver, WA

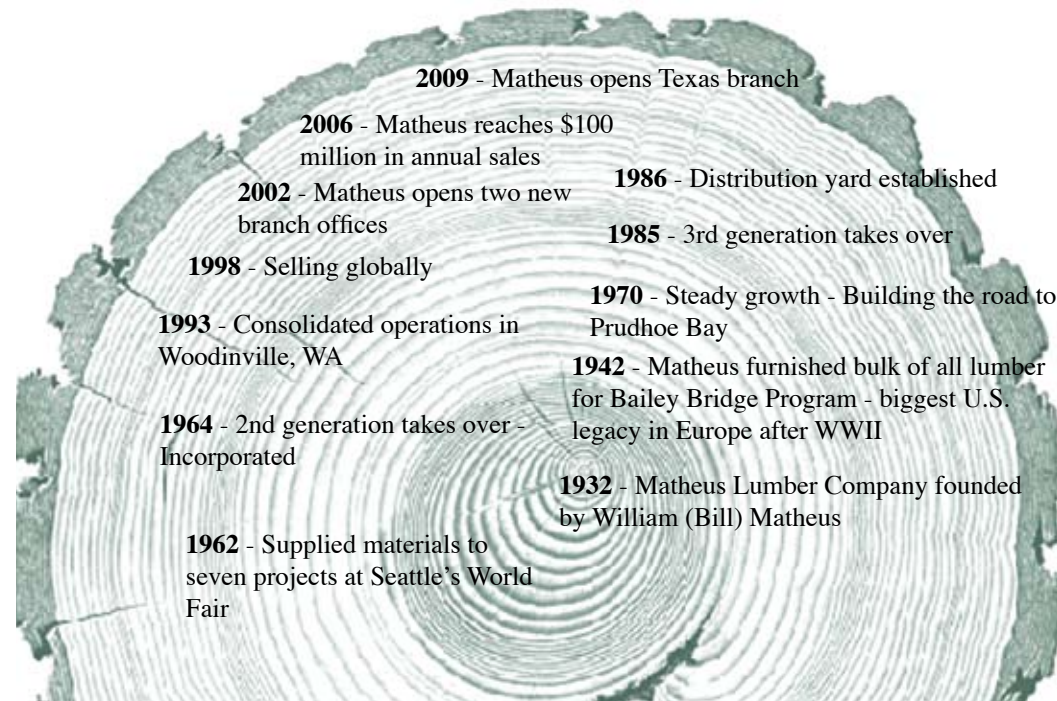
Vancouver, WA Branch Office:
4510 NE 68th Drive Suite 110, Vancouver, WA 98661
Ph.: 360-693-1702 Toll Free: 1-866-693-0003 Fax: 360-693-1884
e-mail: info@matheuslumber.com website: www.matheuslumber.com

Woodinville Office:
Ph.: 425-489-3000 • Toll Free: 1-800-284-7501 • Fax: 425-822-4028

Eastern Washington Branch Office:
Ph.: 509-962-5422 • Toll Free: 1-888-489-3228 • Fax: 509-962-5442

Post Falls Branch Office:
Ph: 208-457-9829 • Toll Free: 1-877-947-9663 • Fax: 208-457-9820

San Marcos, Texas Office:
Ph.: Toll Free: 800-414-3442 • Fax: 512-396-9229



2009 - Matheus opens Texas branch

2006 - Matheus reaches \$100 million in annual sales

2002 - Matheus opens two new branch offices

1998 - Selling globally

1993 - Consolidated operations in Woodinville, WA

1964 - 2nd generation takes over - Incorporated

1962 - Supplied materials to seven projects at Seattle's World Fair

1986 - Distribution yard established

1985 - 3rd generation takes over

1970 - Steady growth - Building the road to Prudhoe Bay

1942 - Matheus furnished bulk of all lumber for Bailey Bridge Program - biggest U.S. legacy in Europe after WWII

1932 - Matheus Lumber Company founded by William (Bill) Matheus